



**Nelson Mandela  
Metropolitan  
University**

*for tomorrow*

# **F4CTS & FI9URES**

## **Nelson Mandela Metropolitan University (NMMU)**

is a new generation university distinguished by a wide range of study options and access routes open to students. NMMU has a **vision, mission and set of values** to take it closer to achieving its shared dream for the future.

### **VISION**

*To be a dynamic African university, recognised for its leadership in generating cutting-edge knowledge for a sustainable future.*

### **MISSION**

*To offer a diverse range of quality educational opportunities that will make a critical constructive contribution to regional, national and global sustainability.*

### **VALUES**

*Our six core values serve as a compass for our actions and describe how we should behave in the world - ubuntu, taking responsibility, excellence, respect for diversity, respect for the natural environment and integrity.*

NMMU is a comprehensive university, offering both general and professionally orientated university programmes from the **entrance level** (certificate) through to **research level** (PhD).

## WE OFFER

**450** PROGRAMMES **OVER** **7** FACULTIES

TO EQUIP **27 000+** STUDENTS

FOR CAREERS IN MORE THAN **130** BROAD FIELDS

**5** of NMMU's campuses are in Nelson Mandela Bay

These campuses are in

**Summerstrand** (three campuses)

next to the ocean,

**Bird Street**

in the heart of the city, and in

**Missionvale**

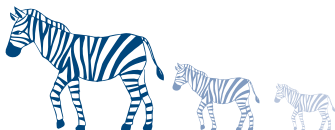
Situated on the Garden Route is NMMU's

**George Campus**

This beautiful campus at the foot of the Outeniqua Mountains.

Our *North* and *South* campuses  
in Summerstrand are on a

**720-hectare private  
nature reserve**



## ACADEMIC

NMMU's academic focus areas – which strategically direct the university's core business of teaching and learning, research and engagement – are the following:



## RESEARCH AND ENGAGEMENT

---

NMMU has:

Research Chairs **10** NRF-rated researchers **81**

Research themes **13** Research Entities **29**

Centres **11** Units **14**

Institutes **4** Technology Stations **2**

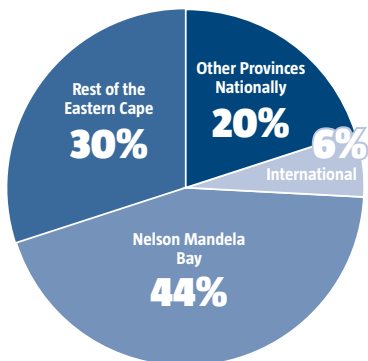
Academic staff with Doctoral Degrees **278**

NMMU's programmes, research and services are responsive to **community needs**.

The university has strong links with industry and businesses nationally and internationally, especially in Africa – and particularly within the **automotive, tourism and pharmaceutical industries**.

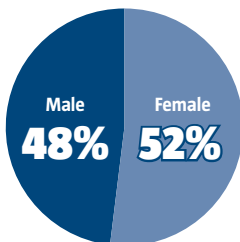
## STUDENTS

### NMMU enrolled students by Geographical origin

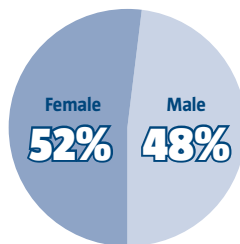


### NMMU 2015 enrolments by gender

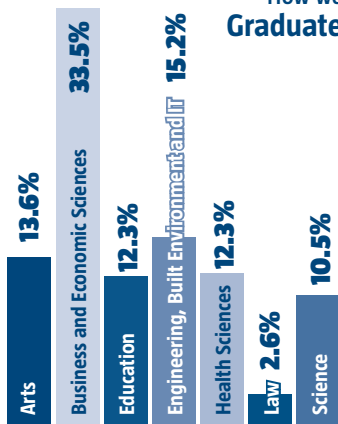
#### Undergraduate



#### Postgraduate



### How we Graduate



	Male	Female
Undergraduate	10 797	11 776
Postgraduate	1 820	1 966
Total enrolled	12 617	13 742

## INFRASTRUCTURE GROWTH

---

Over the past few years, NMMU has experienced unprecedented infrastructure growth, in support of its teaching, learning and research.



### 2015

#### R150m spent on:

- ▶ Art Gallery at Bird Street
- ▶ George Campus Gym
- ▶ Disability projects
- ▶ Bitumen Lab on North Campus
- ▶ CSIR building repurposing for Health Sciences

### 2016

#### Projects to be completed:

- ▶ Science building on South Campus
- ▶ Education building at Missionvale Campus
- ▶ Engineering building phase 2 on North Campus
- ▶ AstroTurf on South Campus
- ▶ InnoVenton extension

NMMU has applied for future infrastructure development for additional residences, a maritime campus and lecture halls.